

COPPERLINE CONDOMINIUMS

Opening the door to waterfront living

ADAMS FLOOR PLAN

BUILDING A

2 Bedroom, 2.5 Baths

2,491 SF of Living Space

435 SF of Patio/Deck

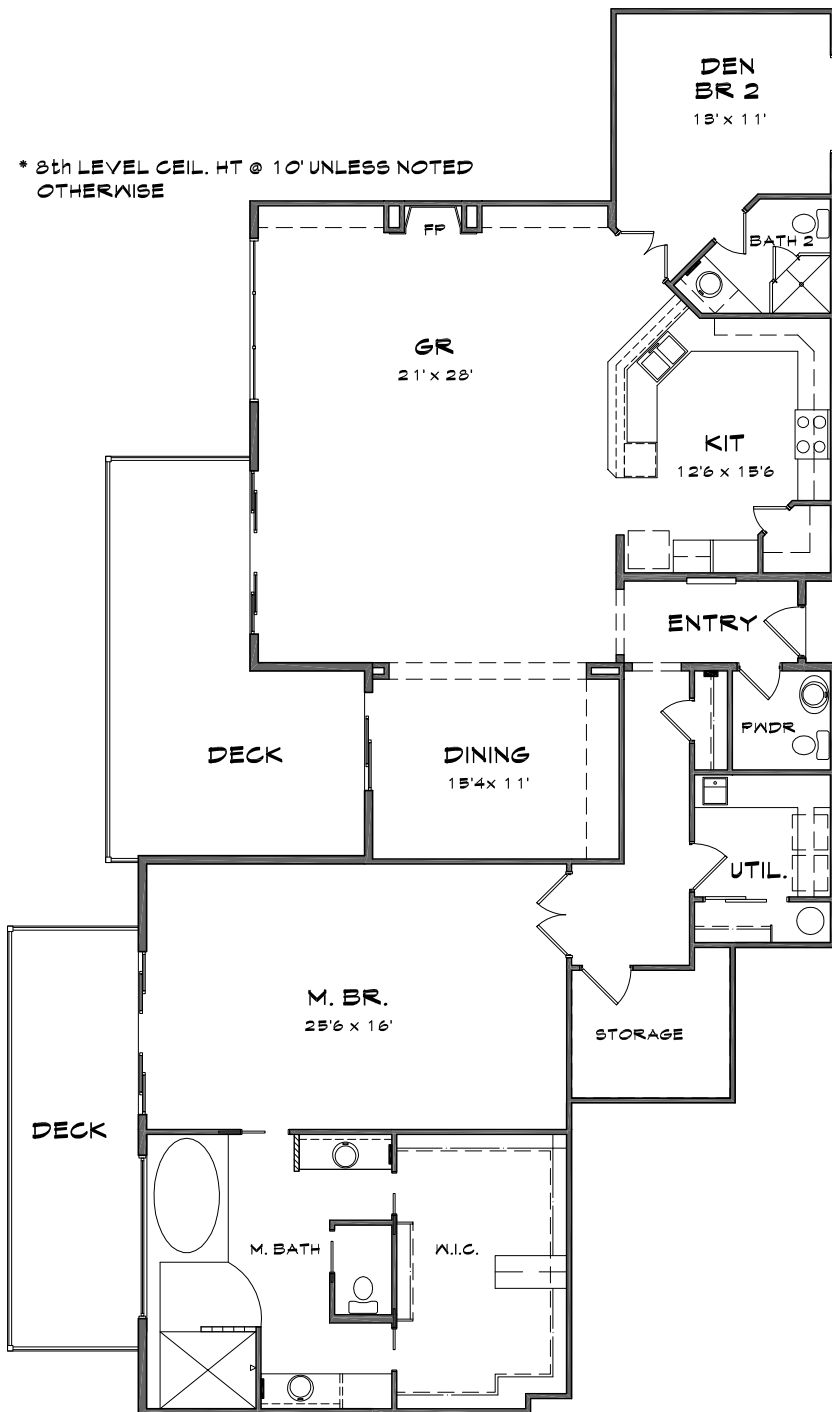
2,926 Total SF

Base Price:
\$1,489,950

The following unit in Building A
features the Adams floor plan:

Water View - 807-A

*Prices subject to change.
All measurements are approximate.*



For additional information, please contact our Community Sales Manager,
Jessica Volkman at 253.759.8400 or jessica@pointruston.com