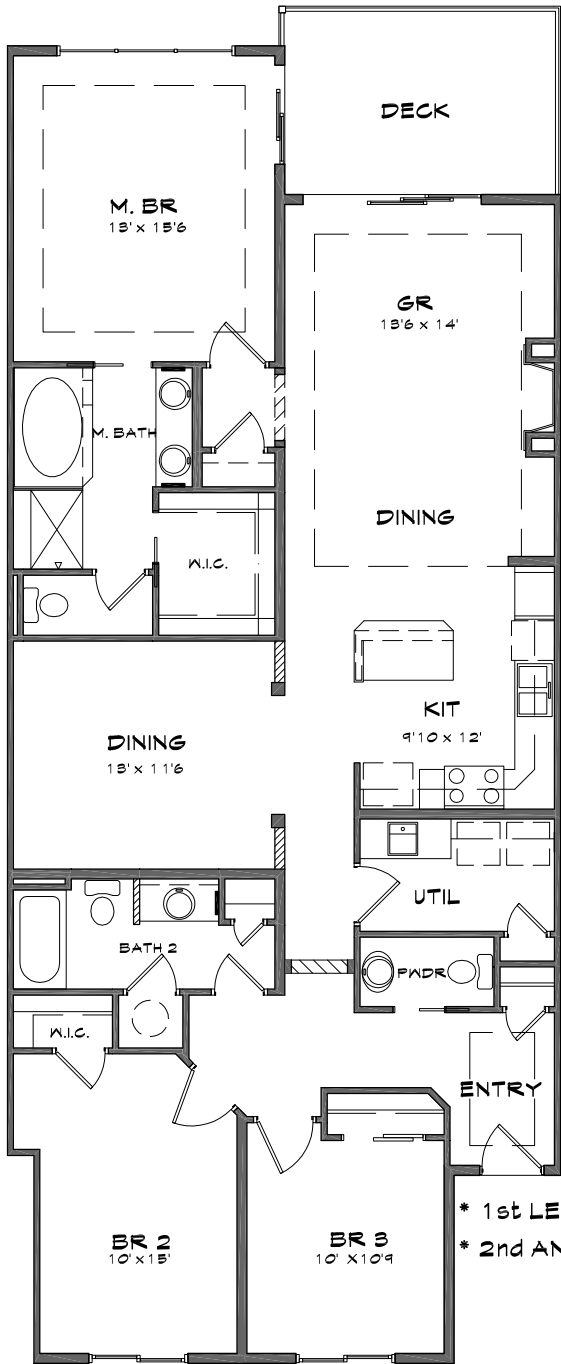


COPPERLINE CONDOMINIUMS

Opening the door to waterfront living



* 1st LEVEL CEIL. HT @ 10'
* 2nd AND 3rd LEVEL CEIL. HT @ 9'

BENTON FLOOR PLAN

BUILDING B

3 Bedroom, 2.5 Bath

1,617 SF of Living Space

133 SF of Patio/Deck
(sizes vary by unit)

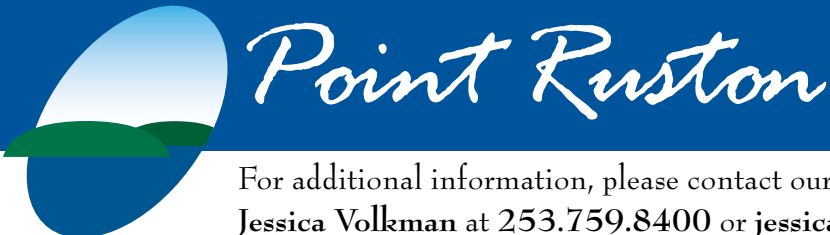
1,750 Total SF

Base Price:
\$851,950 to \$865,950

The following units in Building B
feature the Benton floor plan:

Water View - 105-B, 108-B, 205-B,
208-B, 305-B, 308-B

*Prices subject to change.
All measurements are approximate.*



For additional information, please contact our Community Sales Manager,
Jessica Volkman at 253.759.8400 or jessica@pointruston.com