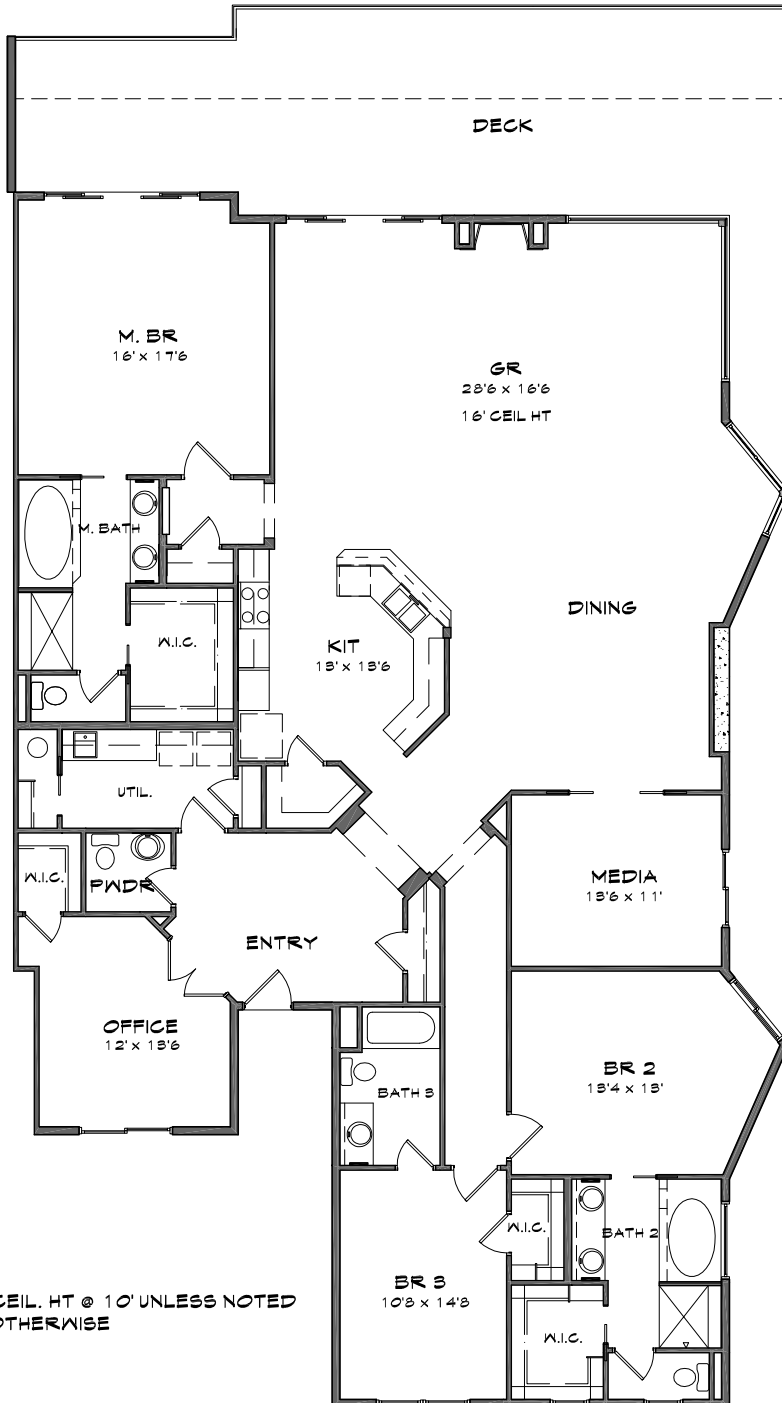


COPPERLINE CONDOMINIUMS

Opening the door to waterfront living



DOUGLAS FLOOR PLAN

BUILDING B

3 Bedroom + Media Room & Den
3.5 Bath

3,041 SF of Living Space

680 SF of Patio/Deck

3,721 Total SF

Base Price:
\$1,980,950

The following units in Building B
feature the Douglas floor plan:

Water View - 401-B, 408-B

Prices subject to change.

* CEIL. HT @ 10' UNLESS NOTED
OTHERWISE



For additional information, please contact our Community Sales Manager,
Jessica Volkman at 253.759.8400 or jessica@pointruston.com