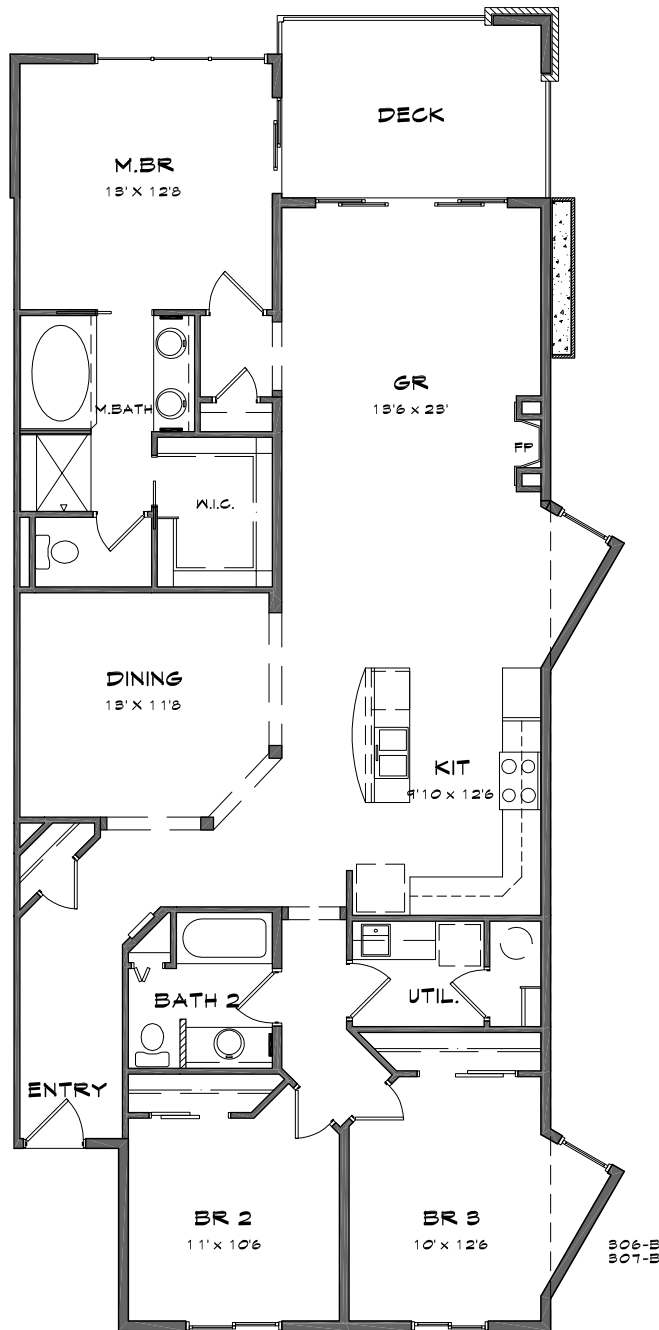


COPPERLINE CONDOMINIUMS

Opening the door to waterfront living



* 1st LEVEL CEIL. HT @ 10'

* 2nd AND 3rd LEVEL CEIL. HT @ 9'

EVANS FLOOR PLAN

BUILDING B

3 Bedroom, 2 Bath

1,620 & 1,651 SF of Living Space

134 SF of Patio/Deck

1,754 to 1,785 Total SF

Base Price:
\$865,950 to \$891,950

The following units in Building B
feature the Evans floor plan:

Water View - 106-B, 107-B, 206-B,
207-B, 306-B, 307-B

*Prices subject to change.
All measurements are approximate.*



For additional information, please contact our Community Sales Manager,
Jessica Volkman at 253.759.8400 or jessica@pointruston.com