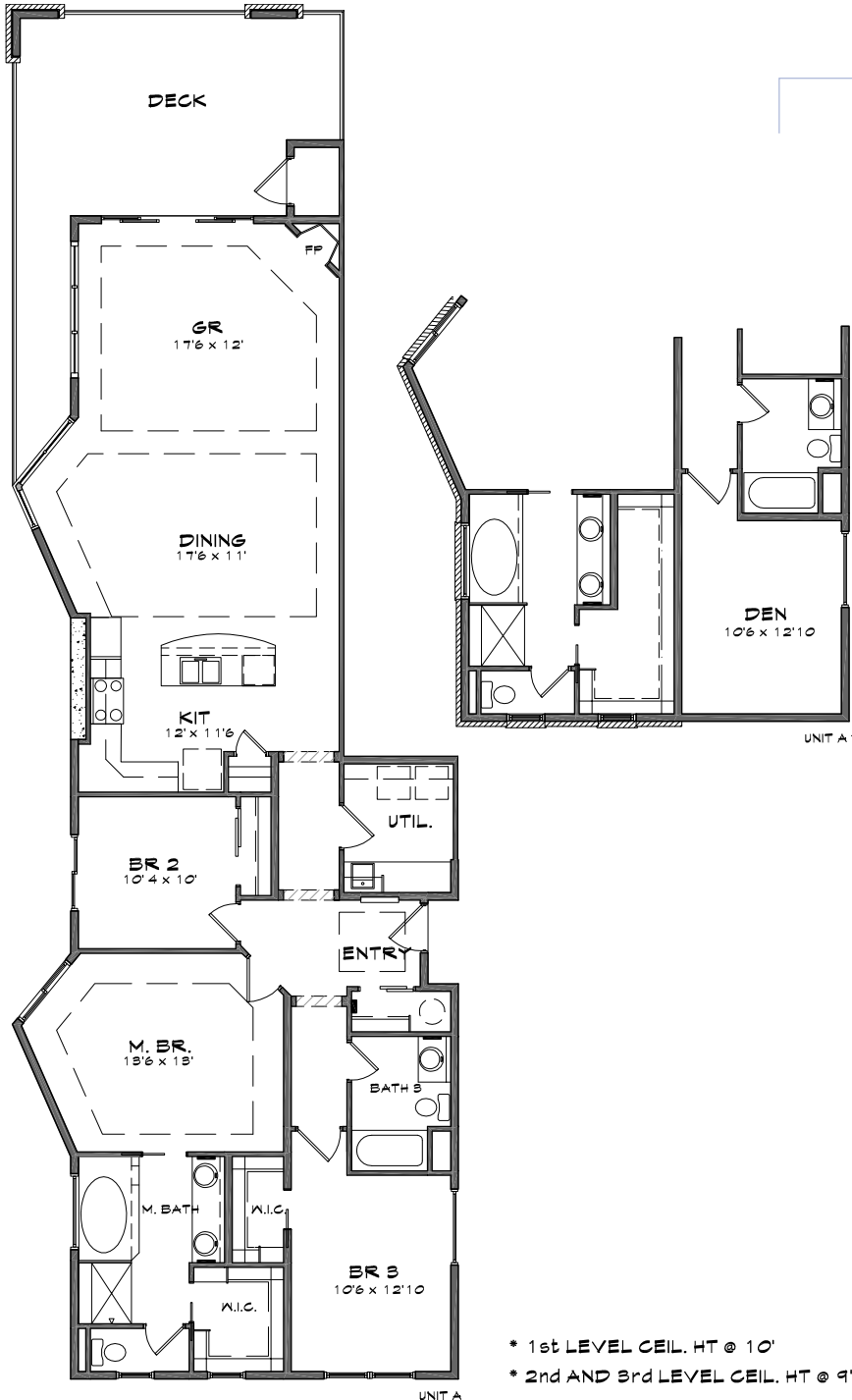


COPPERLINE CONDOMINIUMS

Opening the door to waterfront living



GARDNER FLOOR PLAN

BUILDING B

3 Bedroom or 2 + Den, 2 Bath

1634 SF of Living Space

335 SF of Patio/Deck

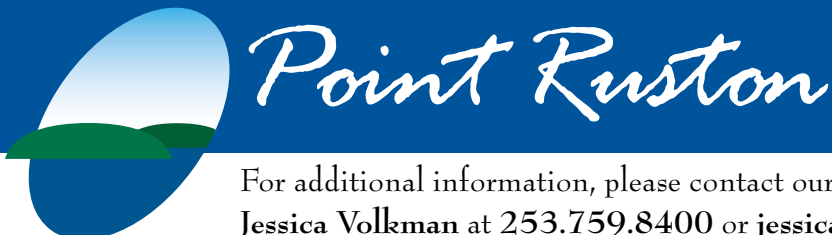
1,969 Total SF

Base Price:
\$898,950 to \$910,950

The following units in Building B
feature the Gardner floor plan:

Water View - 101-B, 112-B, 201-B,
212-B, 301-B, 312-B

*Prices subject to change.
All measurements are approximate.*



For additional information, please contact our Community Sales Manager,
Jessica Volkman at 253.759.8400 or jessica@pointruston.com

* 1st LEVEL CEIL. HT @ 10'
* 2nd AND 3rd LEVEL CEIL. HT @ 9'