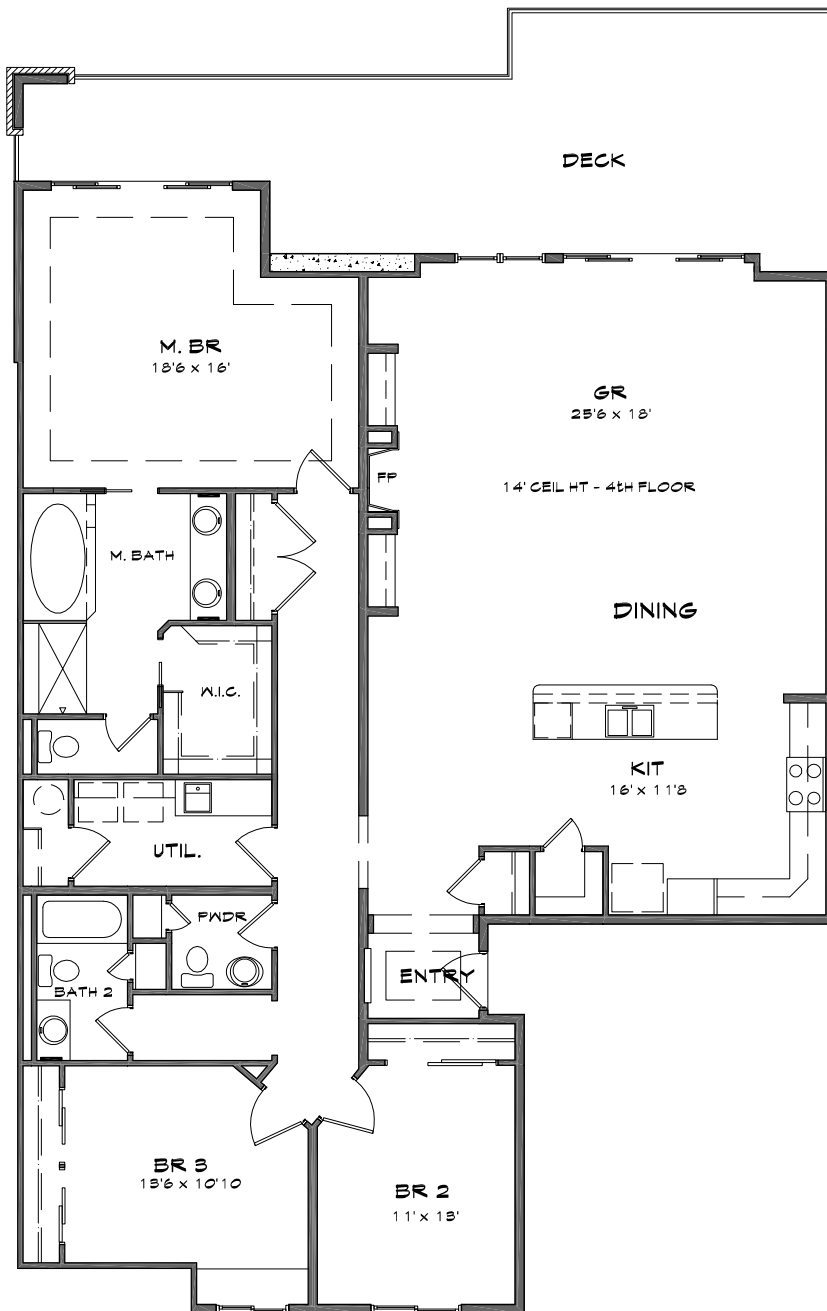


COPPERLINE CONDOMINIUMS

Opening the door to waterfront living



HARTLEY FLOOR PLAN

BUILDING B

3 Bedroom, 2 or 2.5 Bath

2,188 SF of Living Space

465 SF of Patio/Deck

2,653 Total SF

Base Price:
\$1,175,950 to \$1,319,950

The following units in Building B
feature the Hartley floor plan:

Water View - 203-B, 210-B, 303-B,
310-B, 402-B, 407-B

*Prices subject to change.
All measurements are approximate.*

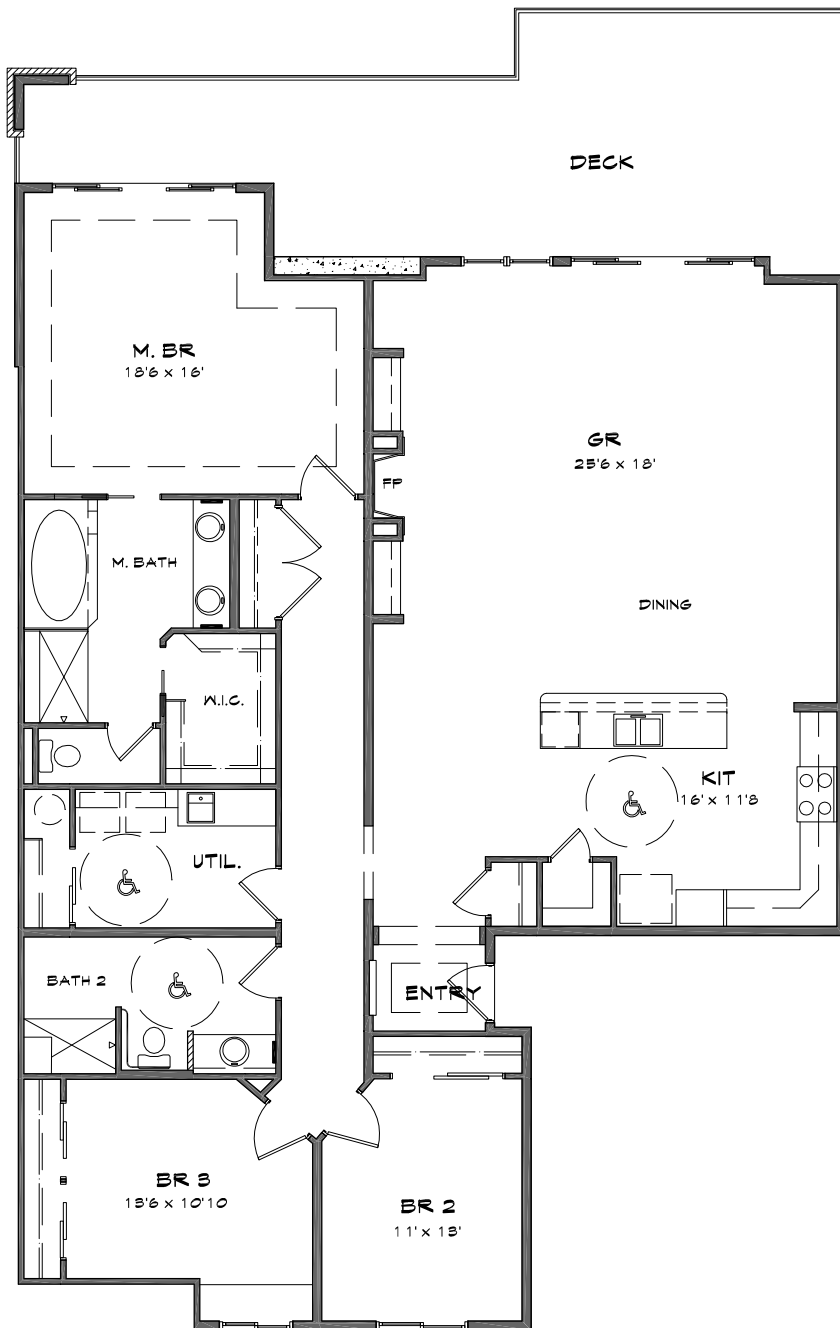
- * 2nd AND 3rd LEVEL CEIL. HT @ 9'
- * 4th LEVEL CEIL. HT @ 10' UNLESS NOTED OTHERWISE



For additional information, please contact our Community Sales Manager,
Jessica Volkman at 253.759.8400 or jessica@pointruston.com

COPPERLINE CONDOMINIUMS

Opening the door to waterfront living



HARTLEY HC FLOOR PLAN

BUILDING B

3 Bedroom, 2 or 2.5 Bath

2,188 SF of Living Space

465 SF of Patio/Deck

2,653 Total SF

Base Price:
\$1,175,950 to \$1,319,950

The following units in Building B
feature the Hartley HC floor plan:

Water View - 103-B, 110-B

*Prices subject to change.
All measurements are approximate.*

- * 2nd AND 3rd LEVEL CEIL. HT @ 9'
- * 4th LEVEL CEIL. HT @ 10' UNLESS NOTED OTHERWISE



Point Ruston

For additional information, please contact our Community Sales Manager,
Jessica Volkman at 253.759.8400 or jessica@pointruston.com

