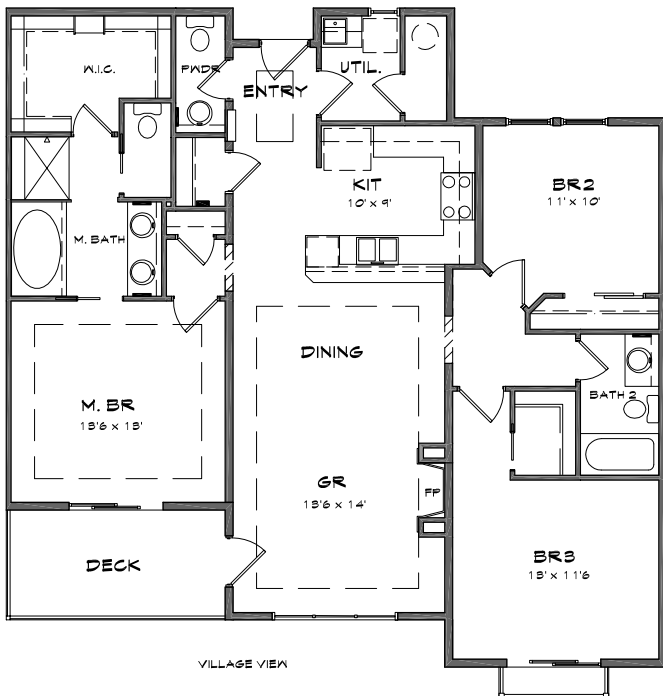


# COPPERLINE CONDOMINIUMS

*Opening the door to waterfront living*



## JACKSON FLOOR PLAN

BUILDING A

3 Bedroom, 2.5 Bath

1,403 SF of Living Space

95 to 1,106 SF of Patio/Deck  
(size varies by unit)

1,498 to 2,509 Total SF

Base Price:

\$635,950 – \$735,950

The following units in Building A  
feature the Jackson floor plan:

Water Side - 403-A, 405-A, 417-A, 419-A,  
503-A, 505-A, 517-A, 519-A, 603-A, 605-A,  
617-A, 619-A, 703-A, 705-A, 717-A, 719-A

Village Side - 404-A, 406-A, 416-A, 418-A,  
504-A, 506-A, 516-A, 518-A, 604-A, 606-A,  
618-A, 804-A, 806-A, 816-A

*Prices subject to change.  
All measurements are approximate.*

- \* 4TH thru 7TH LEVEL CEIL. HT @ 9'
- \* 8th LEVEL CEIL. HT @ 10' UNLESS NOTED OTHERWISE

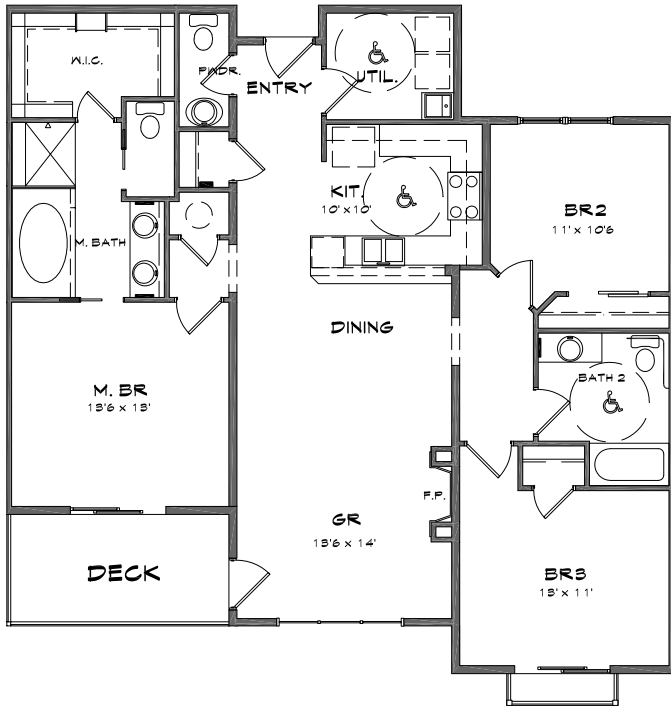


For additional information, please contact our Community Sales Manager,  
Jessica Volkman at 253.759.8400 or [jessica@pointruston.com](mailto:jessica@pointruston.com)



# COPPERLINE CONDOMINIUMS

*Opening the door to waterfront living*



## JACKSON HC FLOOR PLAN

BUILDING A

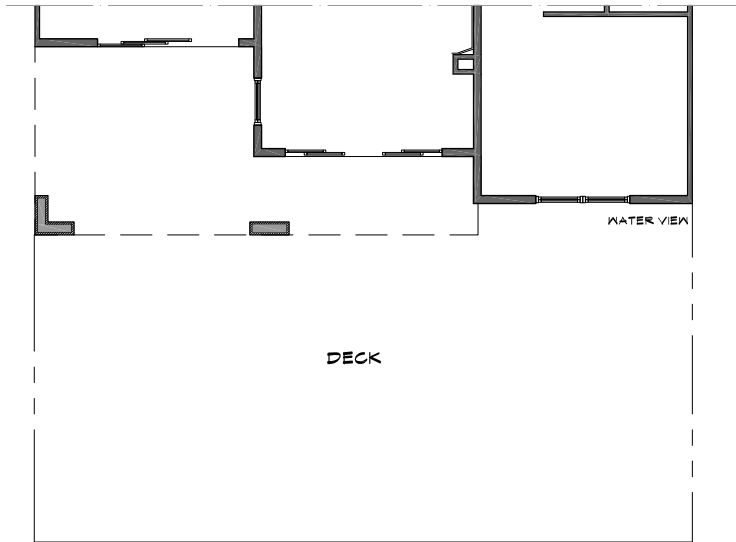
3 Bedroom, 2.5 Bath

1,403 SF of Living Space

117 SF of Patio/Deck  
(size varies by unit)

1520 Total SF

Base Price:  
\$635,950 – \$735,950

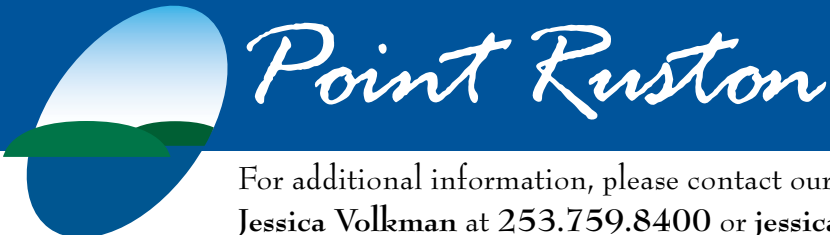


The following units in Building A  
feature the Jackson HC floor plan:

818-A

*Prices subject to change.  
All measurements are approximate.*

\* 8th LEVEL CEIL. HT @ 10' UNLESS NOTED  
OTHERWISE



For additional information, please contact our Community Sales Manager,  
Jessica Volkman at 253.759.8400 or [jessica@pointruston.com](mailto:jessica@pointruston.com)