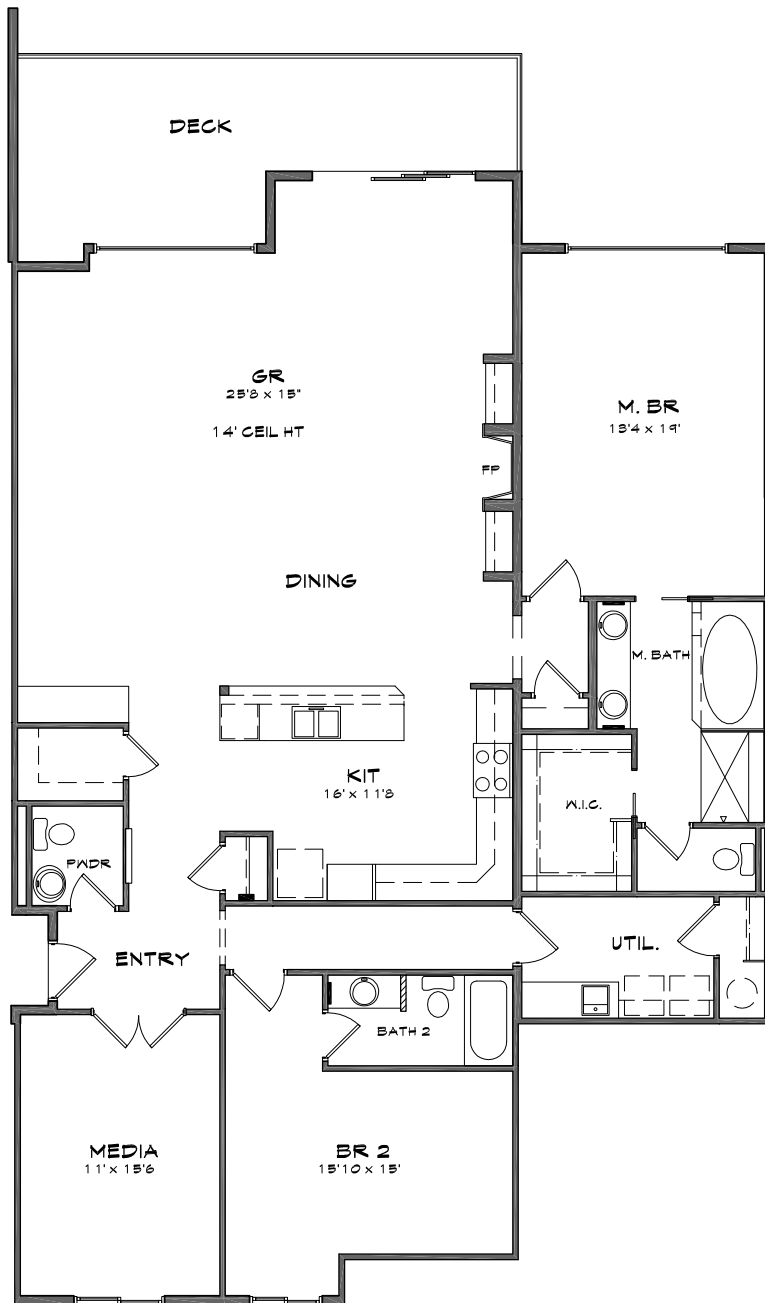


# COPPERLINE CONDOMINIUMS

*Opening the door to waterfront living*



\* 4th LEVEL CEIL. HT @ 10' UNLESS NOTED OTHERWISE

## JEFFERSON FLOOR PLAN

BUILDING B

2 Bedroom + Media Room, 2.5 Bath

2,168 SF of Living Space

222 SF Patio/Deck

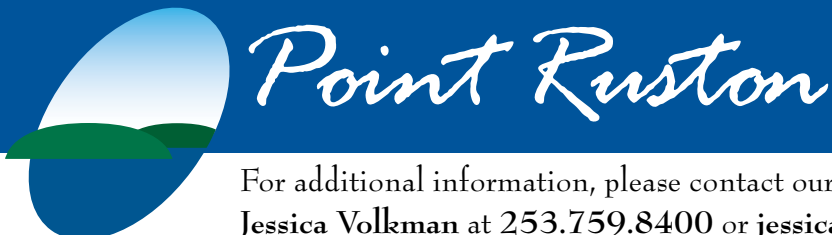
2,390 Total SF

Base Price:  
\$1,304,950

The following units in Building B  
feature the Jefferson floor plan:

Water View - 403-B, 406-B

*Prices subject to change.  
All measurements are approximate.*



For additional information, please contact our Community Sales Manager,  
Jessica Volkman at 253.759.8400 or [jessica@pointruston.com](mailto:jessica@pointruston.com)