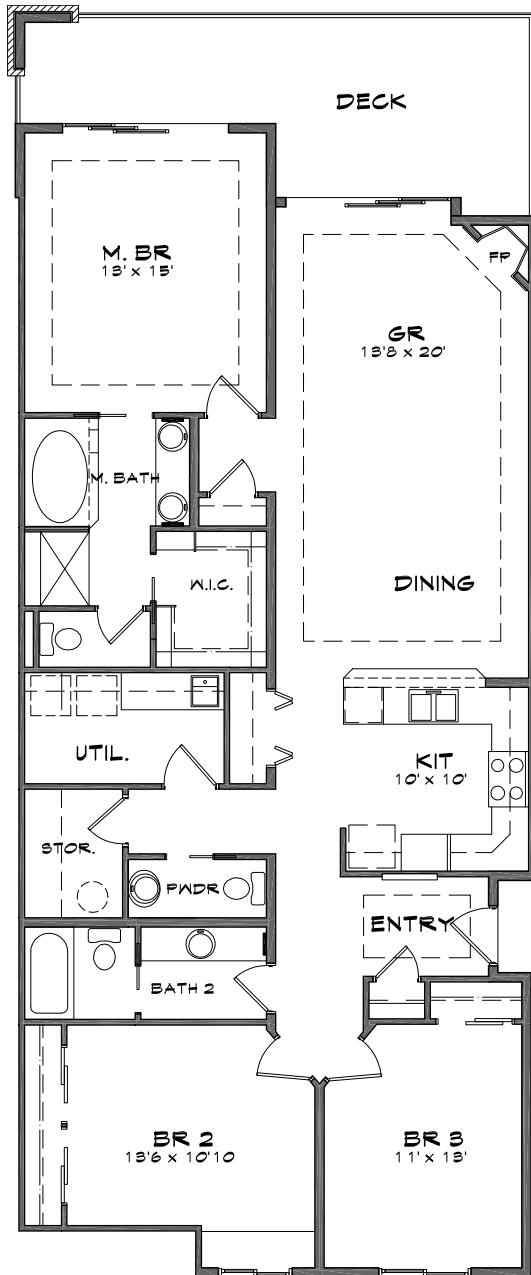


COPPERLINE CONDOMINIUMS

Opening the door to waterfront living



LANGLEY FLOOR PLAN

BUILDING B

3 Bedroom, 2.5 Bath

1,582 SF of Living Space

221 SF of Patio/Deck

1,803 Total SF

Base Price:
\$849,950 to \$859,950

The following units in Building B
feature the Langley floor plan:

Water View - 204-B, 209-B,
304-B, 309-B

*Prices subject to change.
All measurements are approximate.*

* 1st LEVEL CEIL. HT @ 10'

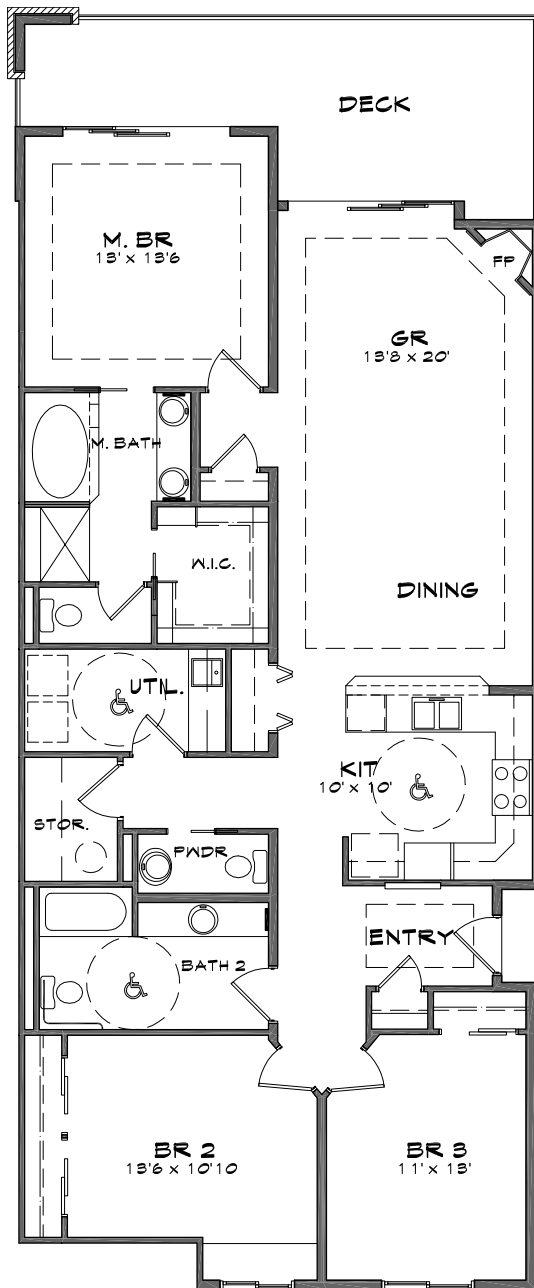
* 2nd AND 3rd LEVEL CEIL. HT @ 9'



For additional information, please contact our Community Sales Manager,
Jessica Volkman at 253.759.8400 or jessica@pointruston.com

COPPERLINE CONDOMINIUMS

Opening the door to waterfront living



LANGLEY HC FLOOR PLAN

BUILDING B

3 Bedroom, 2.5 Bath

1,582 SF of Living Space

221 SF of Patio/Deck

1,803 Total SF

Base Price:
\$849,950 to \$859,950

The following units in Building B feature the
Langley HC floor plan:

Water View - 104-B, 109-B

*Prices subject to change.
All measurements are approximate.*

* 1st LEVEL CEIL. HT @ 10'

* 2nd AND 3rd LEVEL CEIL. HT @ 9'



For additional information, please contact our Community Sales Manager,
Jessica Volkman at 253.759.8400 or jessica@pointruston.com