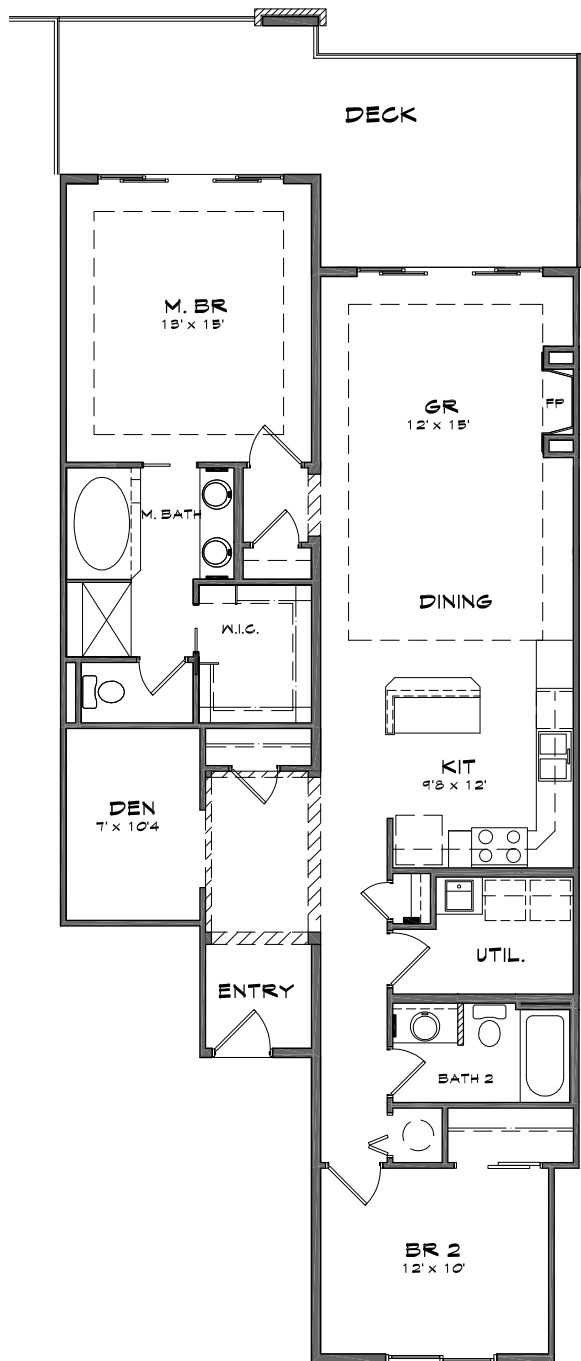


COPPERLINE CONDOMINIUMS

Opening the door to waterfront living



MEAD FLOOR PLAN

BUILDING B

2 Bedroom + Den, 2 Bath

1,360 SF of Living Space

278 SF of Patio/Deck

1,638 Total SF

Base Price:
\$739,950 to \$750,950

The following units in Building B
feature the Mead floor plan:

Water View - 102-B, 111-B, 202-B,
211-B, 302-B, 311-B

*Prices subject to change.
All measurements are approximate.*

* 1st LEVEL CEIL. HT @ 10'

* 2nd AND 3rd LEVEL CEIL. HT @ 9'



For additional information, please contact our Community Sales Manager,
Jessica Volkman at 253.759.8400 or jessica@pointruston.com