

COPPERLINE CONDOMINIUMS

Opening the door to waterfront living

MULLEN FLOOR PLAN

BUILDING A

1 Bedroom, 1.5 Bath

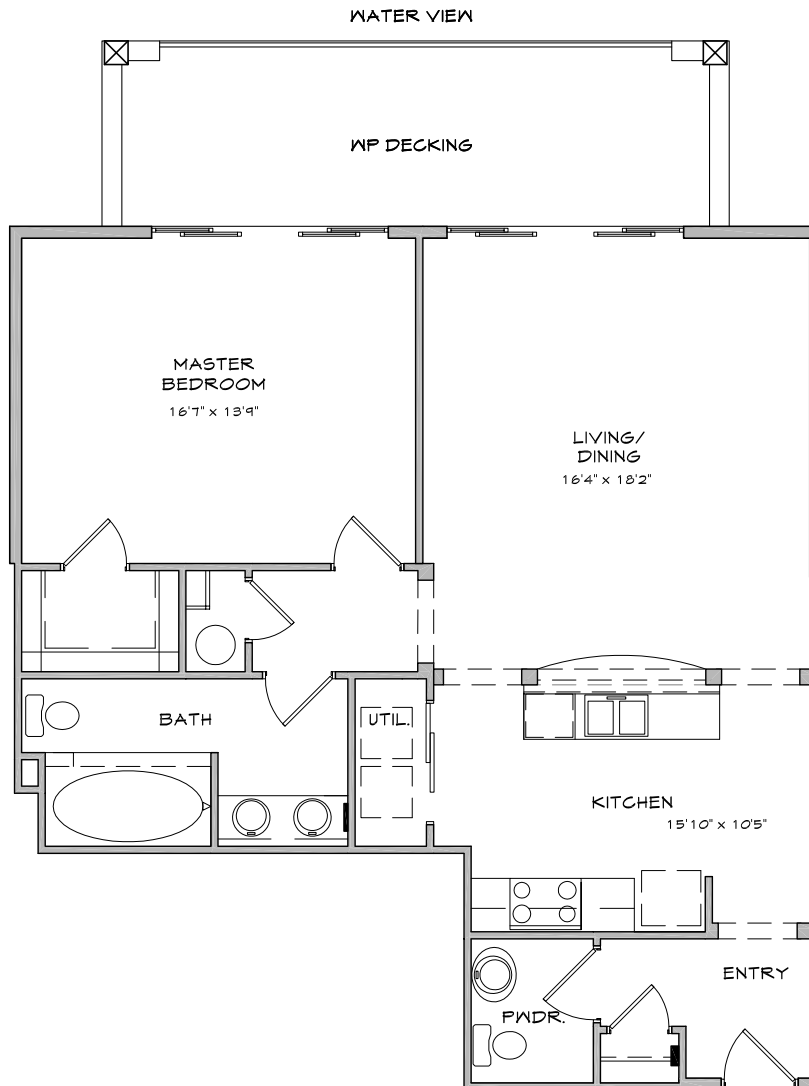
995 SF of Living Space

208 SF of Patio/Deck

1,203 Total SF

Base Price:

\$489,950 – \$518,950



The following units in Building A feature the Mullen floor plan:

Water View - 711-A

*Prices subject to change.
All measurements are approximate.*

thru 7TH LEVEL CEIL. HT @ 9'.



For additional information, please contact our Community Sales Manager, Jessica Volkman at 253.759.8400 or jessica@pointruston.com

COPPERLINE CONDOMINIUMS

Opening the door to waterfront living

MULLEN HC FLOOR PLAN

BUILDING A

1 Bedroom, 1.5 Bath

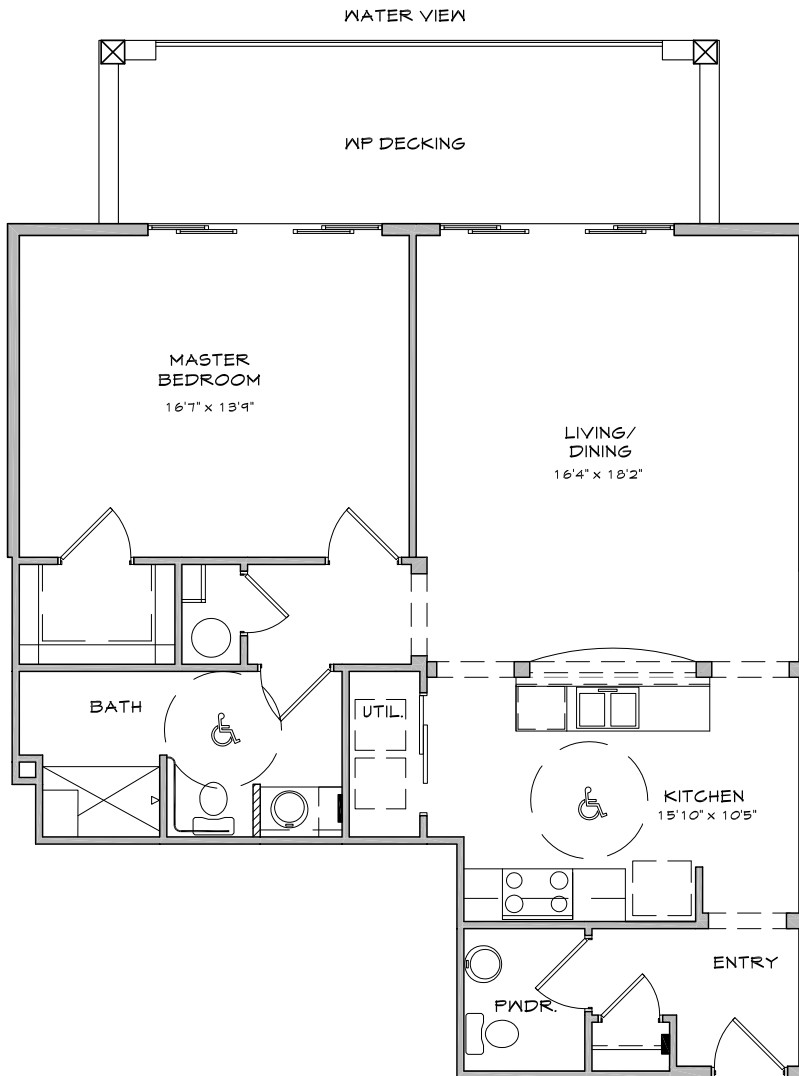
995 SF of Living Space

208 SF of Patio/Deck

1,203 Total SF

Base Price:

\$489,950 – \$518,950



The following units in Building A feature the Mullen floor plan:

Water View - 511-A, 611-A

*Prices subject to change.
All measurements are approximate.*

thru 7TH LEVEL CEIL. HT @ 9'.



For additional information, please contact our Community Sales Manager, Jessica Volkman at 253.759.8400 or jessica@pointruston.com