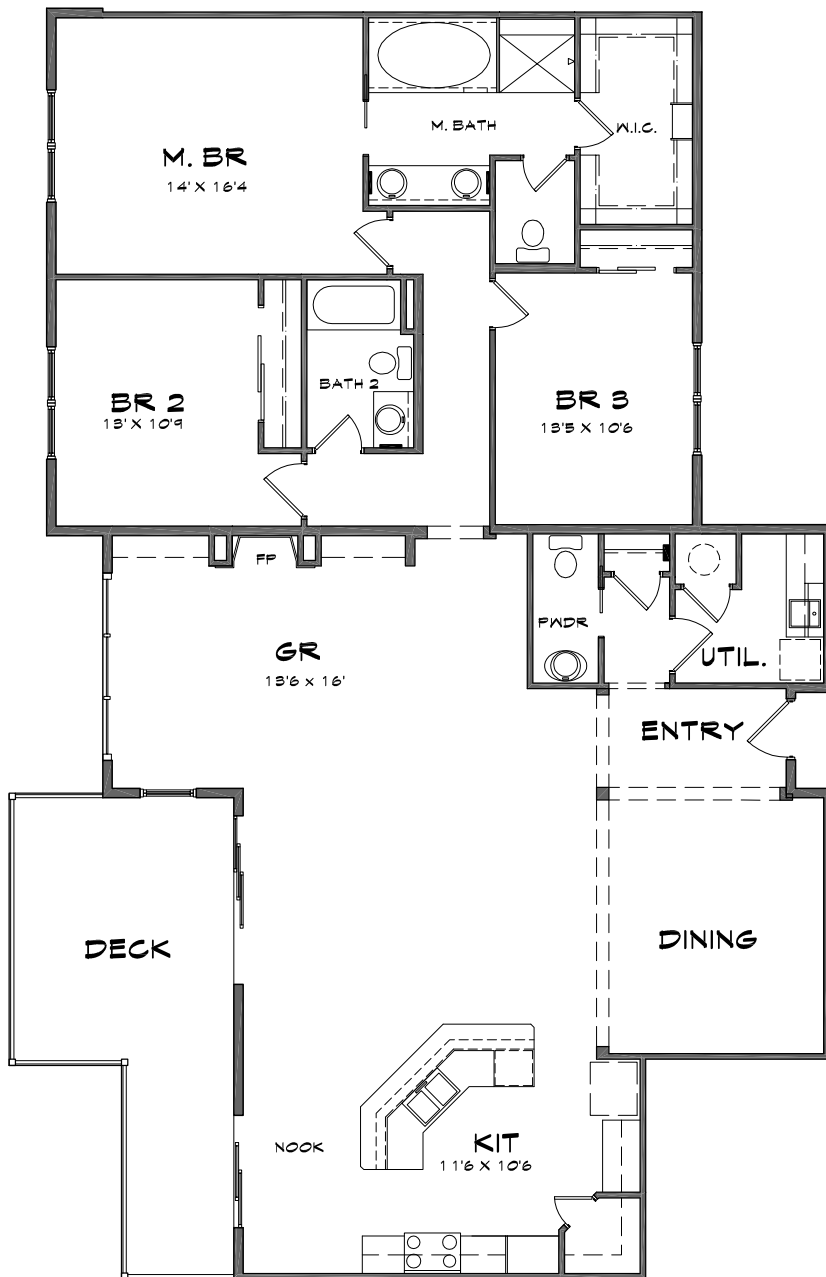


COPPERLINE CONDOMINIUMS

Opening the door to waterfront living



PIERCE FLOOR PLAN

BUILDING A

3 Bedroom, 2.5 Bath

2129 SF of Living Space

246 SF of Patio/Deck

2,375 Total SF

Base Price: \$1,299,950

The following units in Building A feature the Pierce floor plan:

Water View -
803-A, 809-A

Prices subject to change. All measurements are approximate.

* 8th LEVEL CEIL. HT @ 10' UNLESS NOTED OTHERWISE



For additional information, please contact our Community Sales Manager,
Jessica Volkman at 253.759.8400 or jessica@pointruston.com