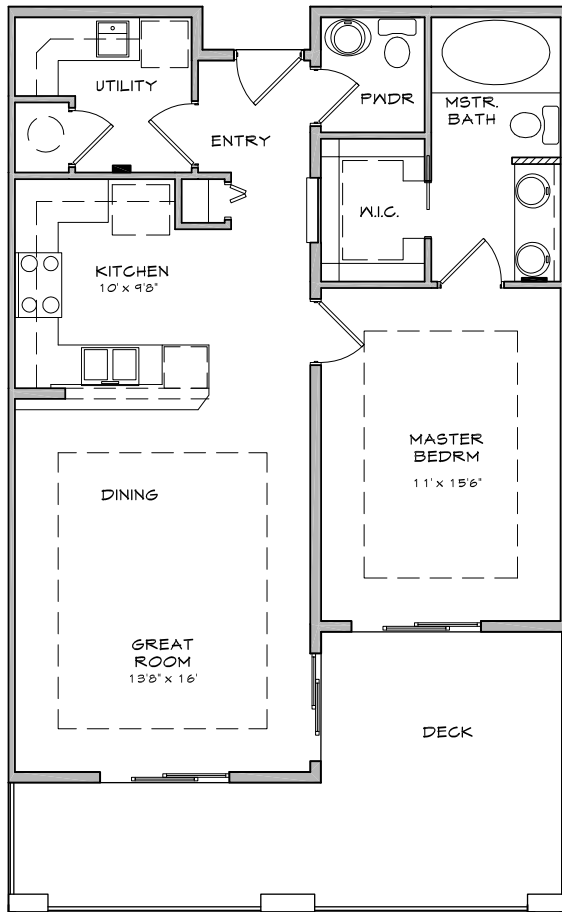


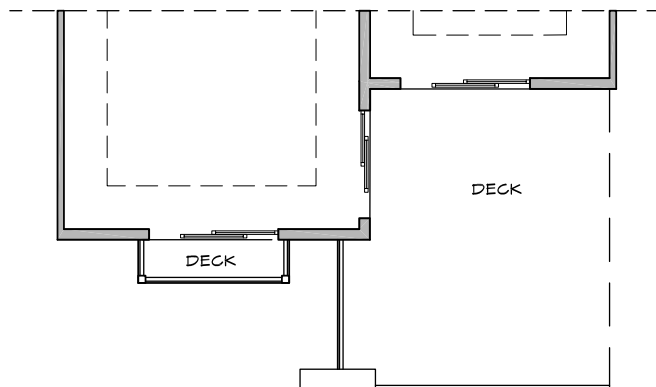
# COPPERLINE CONDOMINIUMS

*Opening the door to waterfront living*



- 4TH THRU 7TH LEVELS CEILING HT. @ 9'
- 8TH LEVEL CEILING HT. @ 10' UNLESS NOTED OTHERWISE

WATER VIEW



VILLAGE VIEW

## WALLACE FLOOR PLAN

BUILDING A

1 Bedroom, 1.5 Bath

793 SF of Living Space

178 to 907 SFPatio/Deck  
(size varies by unit)

971 to 1,700 Total SF

Base Price:  
\$365,950 to \$435,950

The following units in Building A  
feature the Wallace floor plan:

Village Side - 410-A, 412-A, 510-A,  
512-A, 610-A, 614-A, 710-A, 712-A,  
810-A, 812-A

Water Side - 409-A, 413-A, 509-A, 513-A,  
609-A, 613-A, 709-A, 713-A

*Prices subject to change.  
All measurements are approximate.*



For additional information, please contact our Community Sales Manager,  
Jessica Volkman at 253.759.8400 or [jessica@pointruston.com](mailto:jessica@pointruston.com)